

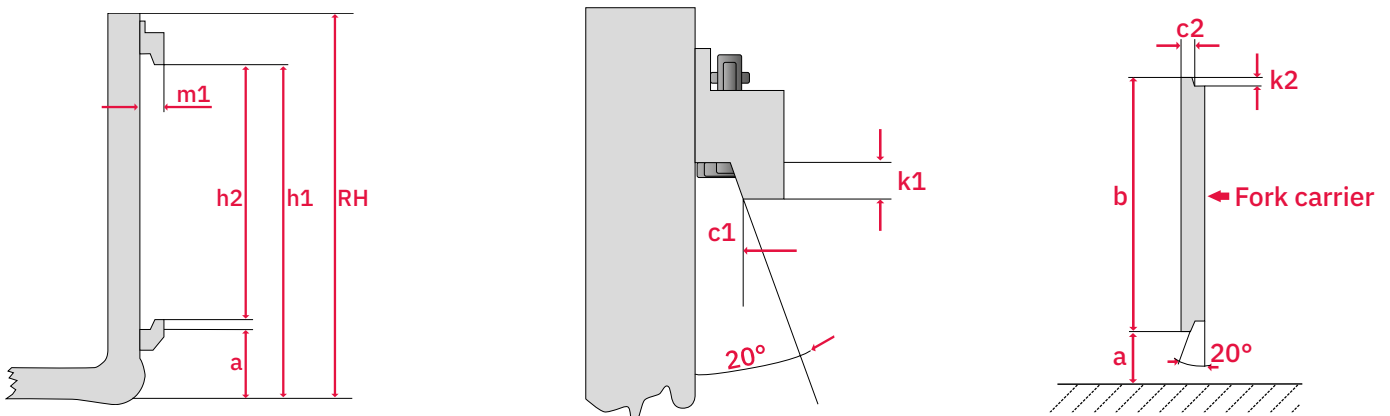


Fork knowledge

ISO suspension

Today, the ISO suspension is world-wide the most common way of connecting forks to the lift-truck. According to the rated truck capacity the ISO standard consists of 5 classes, each of them having a form „A“ and „B“ (e.g. class „2A“ or „2B“). The difference in the forms „A“ and „B“ is the fork drop (clearance lower hook to floor). All measures are defined in the international standard ISO 2328.

In the table below, the most important measures are listed.



Class	Rated lift truck capacity kg	Load center mm	Form ISO	a mm	b-2 mm	c1 ⁺¹ mm	c2 ₋₁ mm	h1±3 mm	h2* mm	k1 min. mm	k2 _{-1,5} mm	m1 max. mm	RH ^{±10} ₅ ISO mm
ISO 1	0-999	400	1A 1B	76 114	331	16,5	16	394 432	306 306	14	13	31	1A 475 1B 510
ISO 2	1,000-2,500	500	2A 2B	76 152	407	16,5	16	470 546	382 382	14	13	31	2A 550 2B 625
ISO 3	2,501-4,999	500	3A 3B	76 203	508	22	21,5	568 695	477 477	17	16	40	3A 655 3B 780
ISO 4	5,000-10,000	600	4A 4B	127 254	635	26	25,5	743 870	598 598	20	19	47	4A 845 4B 970
ISO 5**	8,001-10,999	600	5A 5B	127 257	728	35	34	830 960	680 680	26	25	65	5A 940 5B 1070

* ISO 1 + 2 = Tolerance + 1 mm; ISO 3,4 + 5 = Toleranz + 1.5 mm

** ISO 5 is introduced in 2003, but still unusual in Europe.
The capacity range of 5,000–10,000 kg is still mainly covered by ISO 4.